

CONTRIBUTION OF SENIORS HOUSING TO ALBERTA'S ECONOMY

\$7 BILLION IN ASSETS

"Contribution of the Seniors Housing Sector to the Alberta Economy" - Altus Group

EVERY \$1 SPENT ON HOUSING EQUALS A \$1.40 INCREASE IN ALBERTA'S GDP

- Federation of Canadian Municipalities

TOTAL CONTRIBUTION TO ALBERTA'S GDP IS APPROXIMATELY \$3.3 BILLION/YEAR

"Contribution of the Seniors Housing Sector to the Alberta Economy" - Altus Group

816 BUILDINGS/RESIDENCES

Alberta Seniors Housing Directory - ASCHA

8-10% OF ALBERTA'S GROWING SENIORS POPULATION IS SERVED THROUGH SENIORS HOUSING

Alberta Seniors Housing Directory - ASCHA

SERVES SENIORS IN OVER 300 ALBERTA COMMUNITIES/MUNICIPALITIES

Alberta Seniors Housing Directory - ASCHA

EMPLOYS OVER 28,000 PEOPLE (FTE)

"Contribution of the Seniors Housing Sector to the Alberta Economy" - Altus Group

GENERATES \$175+ MILLION IN PROVINCIAL INCOME TAXES/YEAR

"Contribution of the Seniors Housing Sector to the Alberta Economy" - Altus Group

ONE OF THE LARGEST EMPLOYERS IN ALBERTA'S RURAL COMMUNITIES

"Contribution of the Seniors Housing Sector to the Alberta Economy" - Altus Group

DID YOU KNOW?

By 2046, 1 - 5 Albertans (20% of the population) will be 65 or older
Statistics Canada; Alberta Treasury Board

7% of the population will be over 80
(this is an increase of 238%
- equal to 305,000 people)
Statistics Canada; Alberta Treasury Board

The number of Canadians with dementia will double over the next 15 years to 1.4 million in 2031
(up from 750,000 in 2011)
Senate of Canada

SENIORS HOUSING OPERATIONS AND CONSTRUCTION PRODUCED AN ESTIMATED \$4.7 BILLION IN 2016

"Contribution of the Seniors Housing Sector to the Alberta Economy" - Altus Group

ASCHA
ALBERTA SENIORS COMMUNITIES
& HOUSING ASSOCIATION

WWW.ASCHA.COM

SENIORS HOUSING OPTIONS OFFER COST-EFFECTIVE SOLUTIONS TO THE CRISIS IN SENIORS CARE

STATE OF SENIORS HOUSING

CURRENT

1/3 of Albertans in core housing need are seniors.



45,000

(10% of Seniors live in Seniors housing suites)



800+ Seniors in acute care at a cost of **\$350,000,000** a year

POPULATION PROJECTION:

950,000

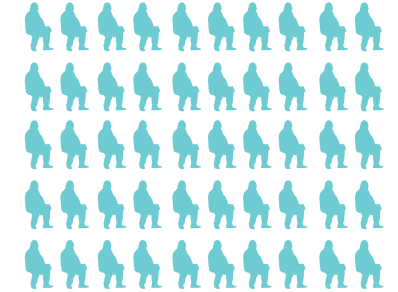
SENIORS IN ALBERTA BY 2031

FUTURE

50,000 SENIORS NEED HOMES



Each senior costs the system **\$437,500** a year, while they wait in acute care.



\$1.2 Billion invested **BUT** 3,333 UNITS PER YEAR WILL STILL BE NEEDED

CURRENT

55,000 seniors are in core housing need (pay more than 30% of income for rent)

FUTURE

116,000 seniors are in core housing need (pay more than 30% of income for rent)

FACT

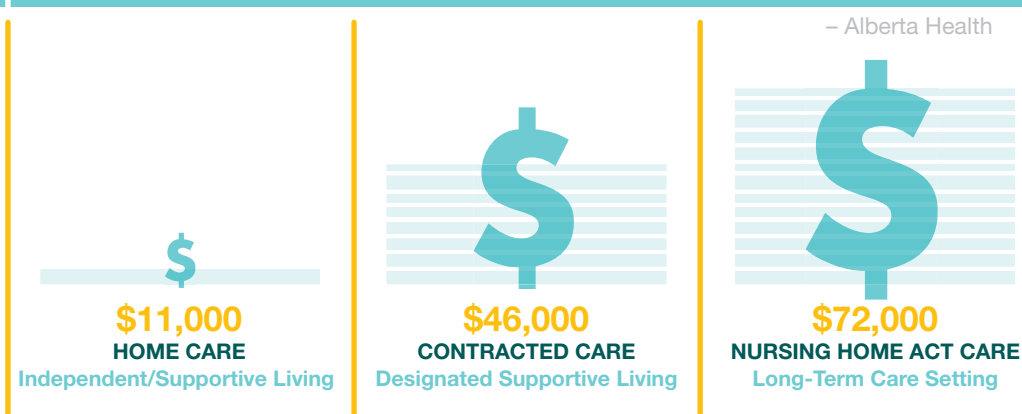
Many of the 50,000 units needed, have to be affordable housing!

► Sources: Statistics Canada, Census of population, 2006 and 2016 and National Household Survey, 2011.

CURRENT LIVING OPTIONS

INDEPENDENT LIVING	SUPPORTIVE LIVING		FACILITY LIVING
		DESIGNATED SUPPORTIVE LIVING	
House, apartment, congregate housing*	Congregate living**		Long term care, nursing home, auxiliary hospital
Home Care serves individuals in both these areas		Provider Care	
Resident's choice of placement		Alberta Health Services determines placement	

2017 AVERAGE ANNUAL HEALTH CARE COSTS



The cost of acute/sub-acute care (alternative level of care) is over **6x** greater than Long-Term Care costs

– Alberta Health Services

* "Congregate housing" means a seniors housing project that provides independent or supportive living for four or more seniors. ** "Congregate living" means four or more individuals living in a building where each individual has a private bedroom or living quarters but shares a common dining room, recreational room, etc.